



Purpose of Parameter file:

Adjusting periodic records of TCMER to periodic records of TK. The adjustment is done after periodic trimming of table K has taken place.

The program compares between value of categories in periodic records as defined in the parameter file and value of same categories in TCMER records. If differences exist the program will create difference record as define in parameter file.

Environment:

TKSQL, TK2000

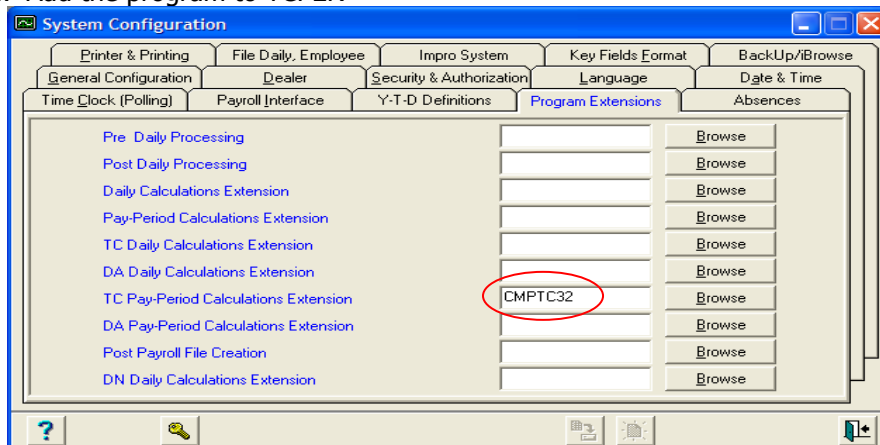
Required programs and files:

SQL Program	From Date
CMPTCSQL	29/01/2006
Comptc.sql	21/11/2005

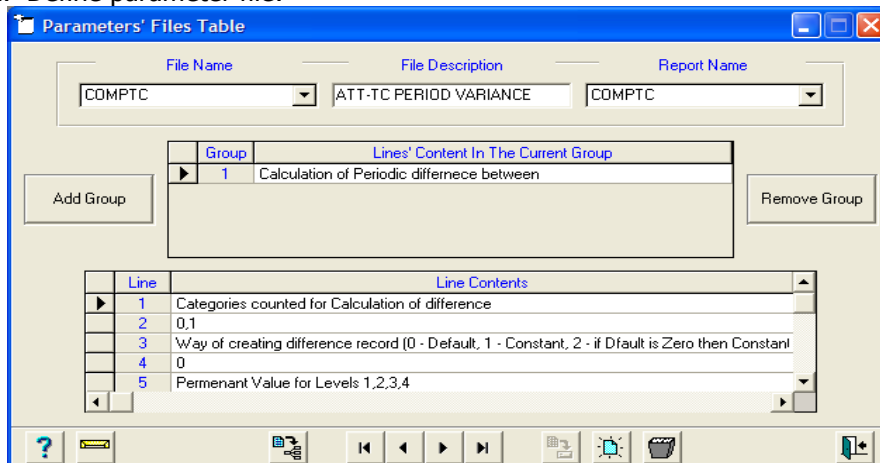
TK2000 Program	
CMPTC32.DLL	04/01/2007

Set up steps:

1. Add the program to TCMER



2. Define parameter file:



- Categories counted for trimmed difference –The difference is the value of TK category (Categories specified in row 2) minus the value of TC category negative result is possible.



- Way of creating difference records – Value of difference is created for: 0 (zero), default TC. The difference will be divided proportionally between the different jobs in TCDEF. 1 (one), constant TC. The differences will be registered to the job defined in row 6. 2 (two), default and constant. If TCDEF exists, will register to TCDEF otherwise will register to constant.
- Constant values for levels, 1,2,3,4. If row 4 was defined as 1, or 2, the constant will be defined here.

Parameters' Files Table

File Name: COMPTC File Description: ATT-TC PERIOD VARIANCE Report Name: COMPTC

Add Group Remove Group

Group	Lines' Content In The Current Group
1	Calculation of Periodic difference between

Line	Line Contents
5	Constant values for levels, 1,2,3,4
6	9999,9999,9999,9999
7	Calculate duration (0 - not changed, 1 - sum of categories, 2 - sum of periodic fields)
8	0
9	0

- When working with default TC values (TCDEF) the row 6 is set to default.
- Calculate duration – value of duration in TCPER after the difference was created a record. 0 (zero), duration stays as is, 1 (one), sum of categories taking part of calculation, 2(two), sum of periodic fields as defined in table K
- Row 8 defined as 0 (zero), duration nor changed
- Row 9 defined as 0 (Zero), no fields to be defined from table K.

Detailed Example

Dave Burns is a Bi-Weekly employee. His daily schedule is 09:00-17:00. Dave worked according to his schedule the entire pay-period except for August 9th (where he left 3 hours early) and August-11th (where he stayed 3 hours late).

According to the corporate Trimming rules (set in TableK), short hours are deducted from overtime (1 short-hour for one overtime-hour) hence overtime in such cases is unpaid:

Plant: 1 LTT		Site: 1 HQ		Department: 5 Painting																
Employee		1006	BURNS DAVE																	
Irregular		In		Out	In	Out	Att.	Late	Early	Wage	*****	REG	O/T	STAT	Unpai	Trim				
Date	Day	Activity	Contract	<1>	<2>	Total	Entry	Exit	Total	*****	HRS	150%	HOL	d O/T	Count.	u				
01/08/2006	Tu		41	9.00	17.00	8.00			8.00		8.00		8.00				*			
02/08/2006	We		41	9.00	17.00	8.00			8.00		8.00		8.00				*			
03/08/2006	Th		41	9.00	17.00	8.00			8.00		8.00		8.00				*			
04/08/2006	Fr		41	9.00	17.00	8.00			8.00		8.00		8.00				*			
05/08/2006	Sa	Optional Day	41														*			
06/08/2006	Su	Paid Leave	41														*			
07/08/2006	Mo		41	9.00	17.00	8.00			8.00		8.00		8.00				*			
08/08/2006	Tu		41	9.00	17.00	8.00			8.00		8.00		8.00				*			
09/08/2006	We		41	9.00	14.00	5.00			5.00		5.00		5.00			-3.00	*			
10/08/2006	Th		41	9.00	17.00	8.00			8.00		8.00		8.00				*			
11/08/2006	Fr		41	9.00	20.00	11.00			11.00		8.00	3.00					*			
12/08/2006	Sa	Optional Day	41														*			
13/08/2006	Su	Paid Leave	41														*			
						72.00			72.00		69.00	3.00				-3.00				
Period Std.		72.00	REG HRS		:	72.00	Categories		:	Days Hours		Absence Type		Days Hours						
Calcul. Std.		72.00			:				:	Early Entry										
Deficiency					:				:	Late Entry										
					:				:	Early Exit										



However, since TableK does not apply on the periodical TC record (TCPER), overtime is not deducted in TCPER hence TCPER holds 69 hours at Regular and 3 hours at overtime (instead of 72 hours at Regular):

Plant	1 LTT	Site	1 HQ	Department	5		
Employee	Period	Project	Process	Net Duration	Cost	REG HRS	O/T 150%
1006 BURNS DAVE	17	ALTIMA A-Type	Design	72.00	735.00	69.00	3.00
Total For Employee				72.00	735.00	69.00	3.00
Total For Department				72.00	735.00	69.00	3.00
Total For Site				72.00	735.00	69.00	3.00
Total For Plant				72.00	735.00	69.00	3.00
Total For Report				72.00	735.00	69.00	3.00