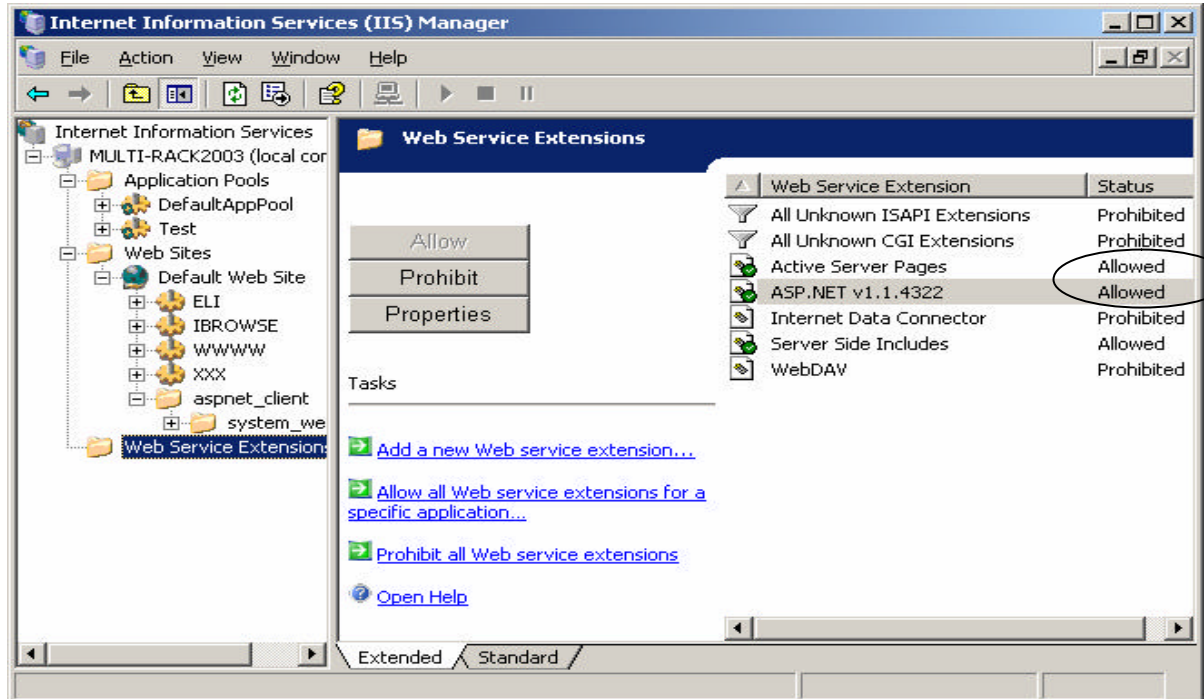


Setting up iBrowse – Windows 2003™

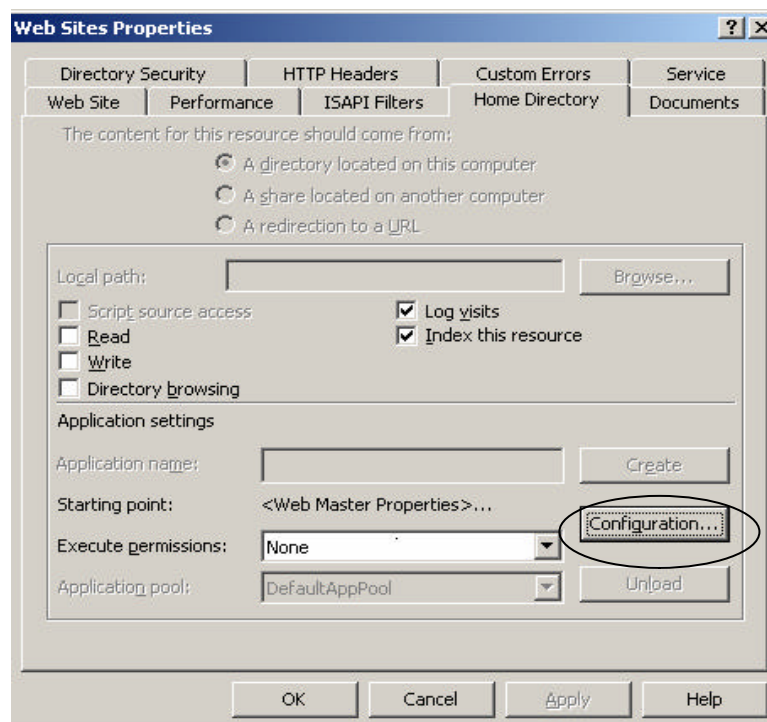
Additional instruction for iBrowse installation on 2003 server.

1. IIS Parameters

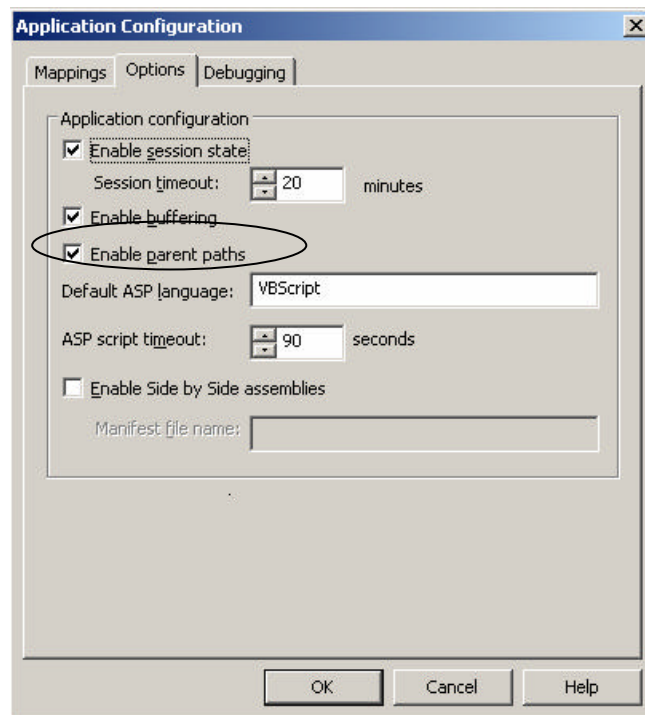
1.1. Ensure that **Active Server Pages** and **ASP.NET v1.1.4322** under **Web Services Extension** defined as **allowed**.



1.2. Web Sites Properties -> Home Directory -> Configuration

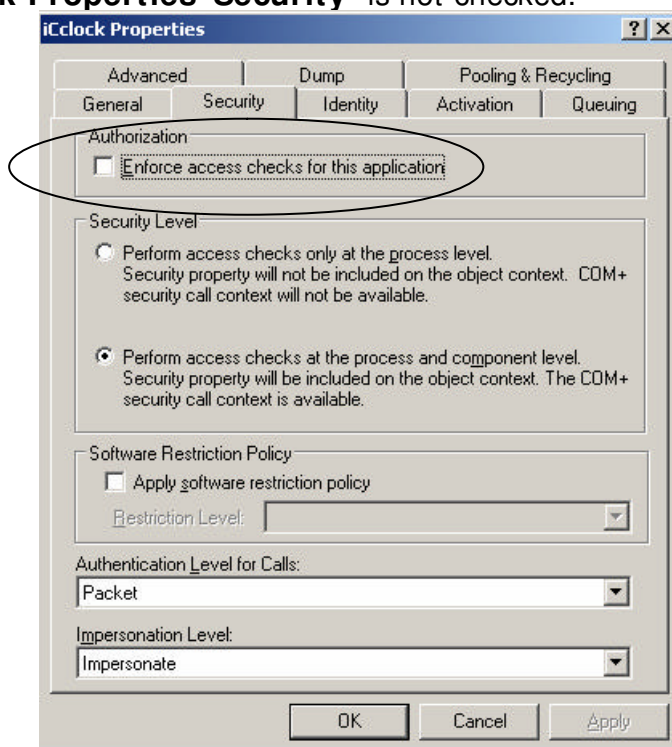


Press on ³**Option** and ensure **Enable parent path** is checked.



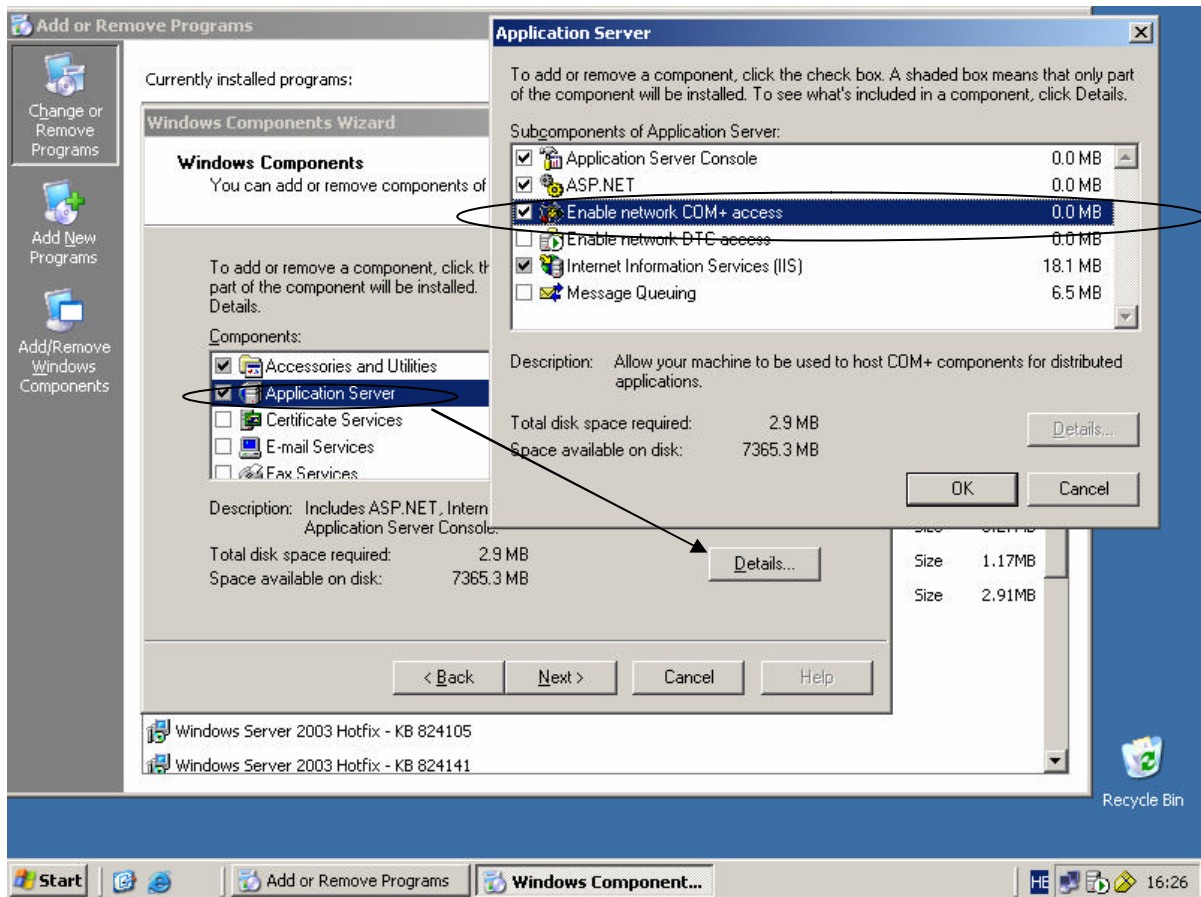
COM+ Parameters:

Ensure that the parameter “**Enforce access checks for this application**” under “**IClock Properties Security**” is not checked.



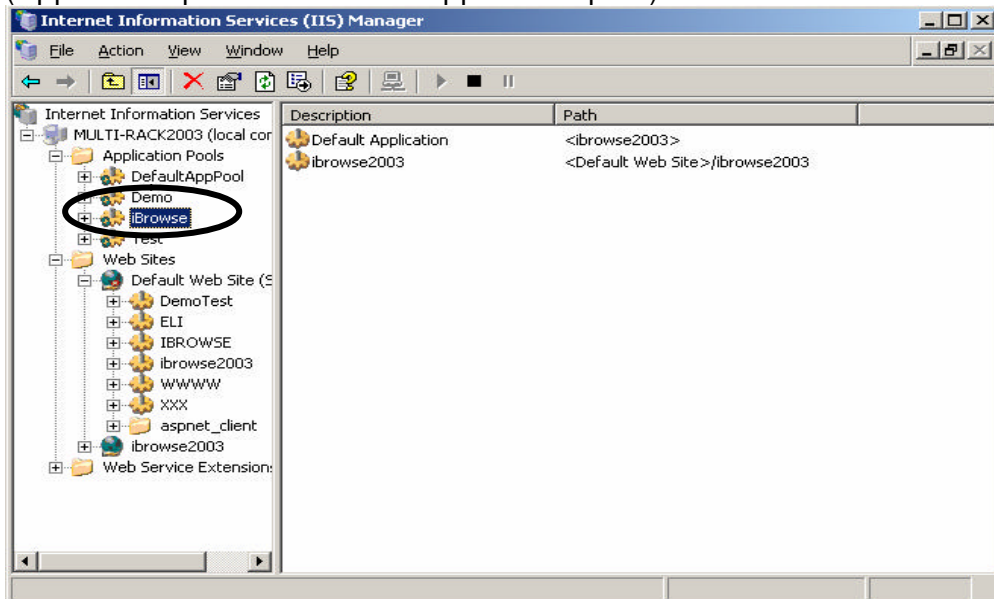
. Windows Components:

When working with RPC configuration (separates the SQL server from the COM server), ensure that the following items are checked:



4. Install IBrowse definition on server 2003:

In server 2003 you can define separate **Application pool** for each site.
Build new Application pool, and name it IBrowse.
(Application pools -> new -> Application pool).



After building the Application pool you can add this parameter in Virtual Directory Properties:

