



August 2002

Preface

When working TimeCosting, it happens that an employee will work on one project (Job) for a period longer than one day. Until now there was no way to handle such scenario and employee had to report each day with the same job. This scenario is now made possible. An employee will report any required job at the end of it only. TimeCosting will 'look back' to previous TC records in order to 'fill up' all missing hours that were not accounted for. The system will create TCDAY records for all days not accounted for and will add this duration to the last reported job.

This option is enabled on both 'End Of Jobs' and 'Start Of Jobs' reporting modes!

Environment:

TK2000, TK-SQL

Required Program FilesPrograms

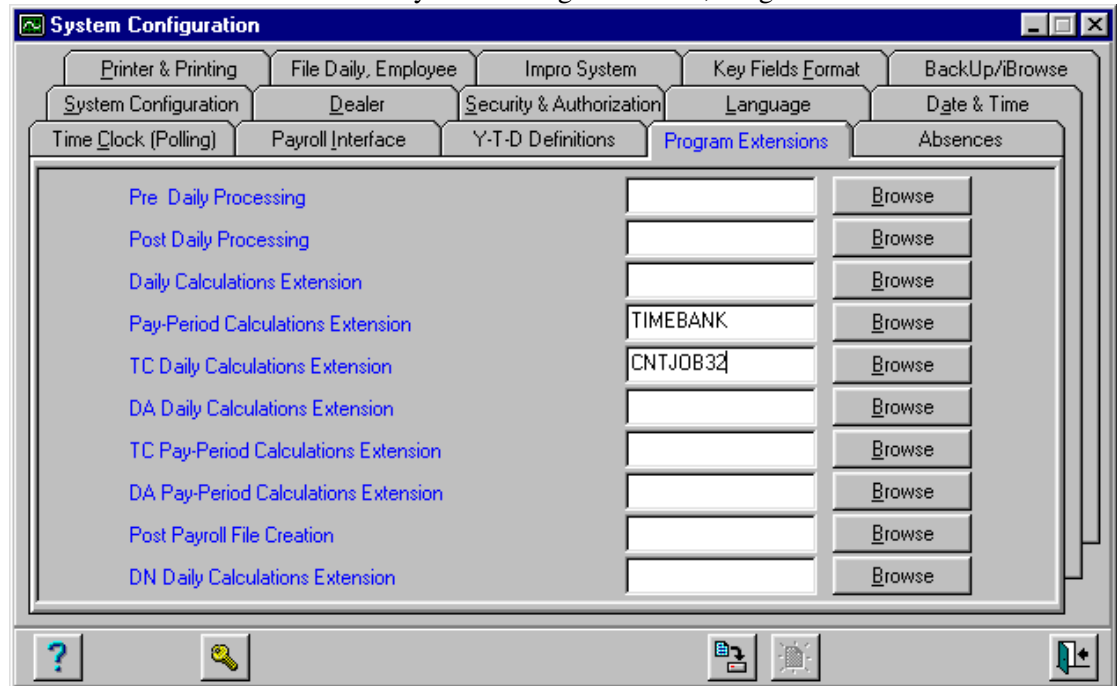
TK2000\CNTJOB32.DLL	July 23 rd 2002
TK2000\CLSTC32.DLL	July 22 nd 2002

Files

TK2000\DATA\PARAM.*

Setup Steps:

1. Copy the programs to the TK2000 directory.
2. Upgrade the Parameter file.
3. Add the CNTJOB32.DLL to the System Configuration file, Program Extensions tab:



Parameters' Files Table

Bestandsnaam: CONTJOB

Omschrijving: Post CalcTC for Continued Job

Rapportnaam: PROGRAM

Groep toevoegen

Groep	Lines' Content In The Current Group
1	Allowed_Variance (Minutes)
2	Max_Continued_Period (in Days Until 90 Days)
3	Mandatory_Sequence (1=Yes; 0=No)
4	Maximum_Break_Period (in Days)

Groep verwijderen

Regel	Line Content
1	10
2	
3	
4	
5	
6	

Toolbar icons: Help, File, Print, Navigation, etc.

- 4.1 Allowed Variance (minutes) – Minimal overlap between start of job and end of job.
- 4.2 Max Continued Period (days) – Maximum number of days to apply for one job.
- 4.3 Mandatory Sequence – Define if an absence should break the continuance of job or not
- 4.4 Maximum Break Period – If 4.3 = 1 (Yes), it should defined the maximum number of continuance absence days that should break job continuance.