



Purpose:

the program designed to allow the supervisor to view and update the employee's daily activity file, in dates which they reported on their projects that the supervisor has authorized, additional to the employees which under his organizational level.

The supervisor can view and update the employee's daily activity file which temporarily were attributed under his responsibility in the dates which he has an authorize to view and to update.

Environment:

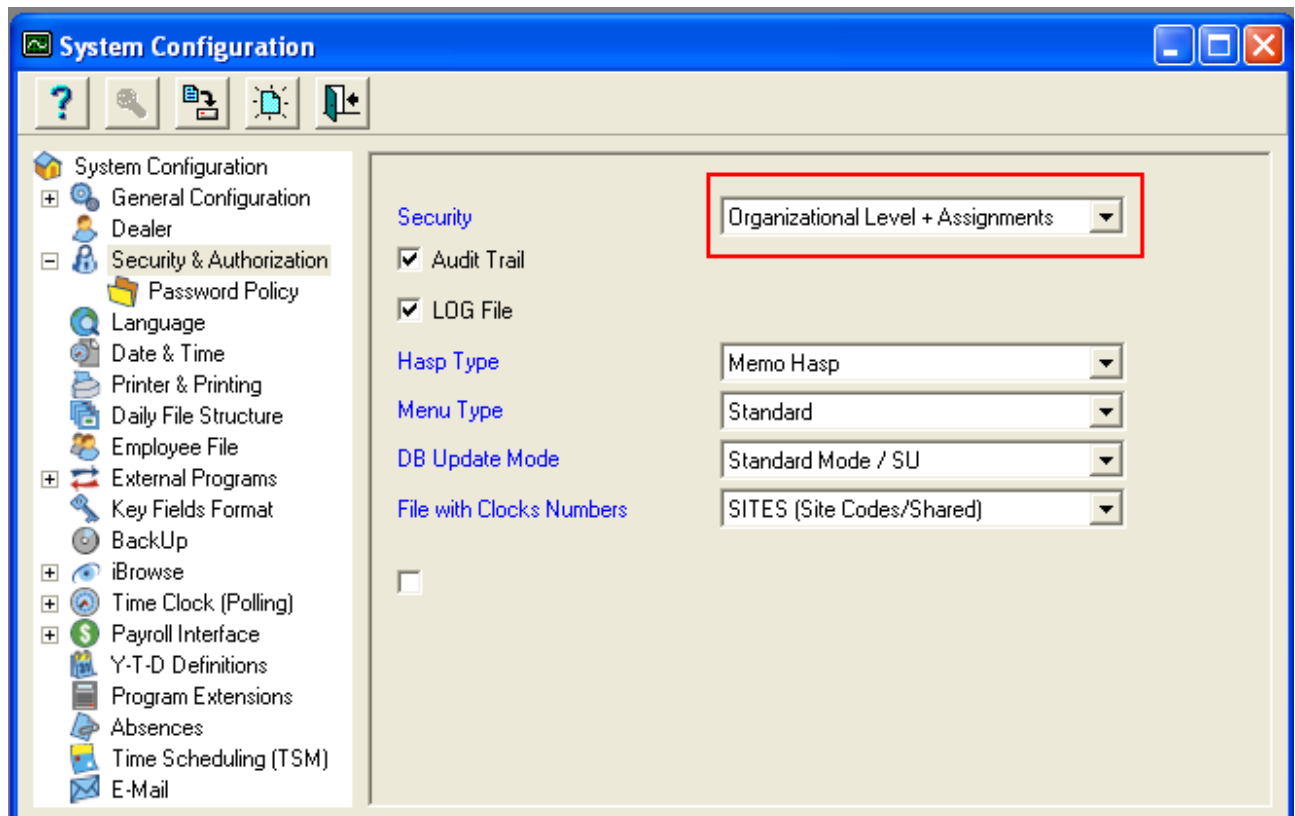
SQL system only (IBROWSE + TK + TC).

Required Program Files:

SQL set from 1.8.2007

IBROWSE version 7.01

Configurations:





- In the security field please define **"Organizational Level + Assignments"**.
The supervisor allows viewing and/or updates the employees which under his organizational level (without any reliance with the assignment which they reported) + employees that work under the supervisor's projects in the dates that authorized (borrowed workers).
- Supervisor which has not have employees that under his organizational level, will view and update employees that worked only in his assignments.

Users Definitions:

In case that the authorizations defined by assignment, "TC LEVELS" tag will be turn on which can define the authorize assignments of this user and the authorized level for the daily activity file (view and update, view only).

While all authorizes are "All Allowed" the TC LEVELS tag will be gray because the user has authorize to view and update all the employees. Only in case of defining a specific authorize, the TC LEVEL tab will turn on in order to enable authorization of the organizational level.

In the TC LEVELS tab you can define the assignment in 4 levels: (project, batch, part, process).

The system does not support in related levels.

The authorized assignments are a result of intersection of all levels. Which means that by



choosing in an assignment X on project level and all 3 other levels as "all allows", enable a combination with the assignment X.

Choosing project X and batch Y will get an authorized for assignment which combines from project X + batch Y and the combination from the 2 other levels, etc.

In addition, there is another intersection of the assignment levels also with the activity dates of every level, which means that if project X is active between the 1/7/07- 31/7/07 and batch Y is active between 10/7/07- 15/7/07 then the intersection between the dates gives the next assignment: project X + batch Y in the dates 10-15/7/07.

It is possible to update the assignment of "borrowed workers", only in records which the assignments are been authorized for the user. The possibility to update in every level is just for those whose authorized for the user but only in authorize dates.

In the rest assignments in these dates the user only can watch.

Allow edit attendance data (relevant only for the "borrowed workers") - checking this box will allow the supervisor to update the attendance data for the day which has a TC LEVEL. Update the assignments is possible for any case the user has authorized for the assignments.



In every TC level you can define:

1. The date definition that will show the authorized assignments for these range (on the top of the screen).
2. There is a possible to add/delete lines with no limit.
3. You have to choose the assignment, the update status and the validity.
4. There is a possible to define number of ranges for each assignment.
5. There is a possible to define the same authorize dates for deferent assignments however not for the same dates for the same one.
6. The default dates range of every assignment fixed by the dates which this assignment defines in the relevant table. For example, in the project table will be marked the active/inactive assignment dates.

Valid for dates From 09/03/2007 Till 12/31/2099 Display

Level 4:Project Code

	Project Code	Name	Update status	From date	Till date
1	100087	100087	Read/Write	01/01/1990	12/31/2099
2	100093	100093	Read/Write	01/01/1990	12/31/2099

Ok Cancel



In the supervisor's employees list, the employees that under his organizational level will appear black color while the "borrowed workers" who's under his project will appear in red color.

Select Range To Edit [X]

Employee

Number Last Name First Name

Number	Last Name	First Name
10	WILHELM	MICHELLE
50	RUST	ANDY
70	LAST	JOHN
90	QUINTANTILHA	VASCO
100	CORLEVIC	JOE
110	SANE	MARGOT
120	BESTER	ALLAN
130	EVANS	EILEEN

OK Cancel

In the DAILY BROWSER the authorized assignment will appear like this:

Employee: 110 SANE MARGOT

Date	Day Type	Notes	Department	Contract	Absence Code	Error 1	In 1	Out 1	DURATION	Total Attn	Paid Attn
08/27/2007	1 Mo	<input type="checkbox"/>	9	130 Hourly Employees			8:00	18:00		10.00	10.00

TCDAY (Daily Job Transfers/TC)

Record Date	Position	Project Code	Start Time	End Time	Qty Good	Duration	Percent	REG	OT 1.5	OT 2.0
08/27/2007	1 Admin Assistant - 60% AUPE Perm	100093 100093	:	:						
08/27/2007	1 Admin Assistant - 60% AUPE Perm	102229 102229	:	:						
08/27/2007	1 Admin Assistant - 60% AUPE Perm	100115 100115	:	:						
08/27/2007	1 Admin Assistant - 60% AUPE Perm	100087 100087	8:00	18:00		10:00	1.000	10.00		

Direction because there is an authorization to the supervisor to see the employee in the same day, he will show all the assignments that report to the day. But he will be able to update only the assignments that he authorized.

The unauthorized assignments will appear in the gray background, and the supervisor will not be able to execute in them any update.



The authorized assignments will appear in the white background, and the supervisor will be able to execute in them updates according to the authorization.
It is possible to add new task bar. Only the authorized assignments will be appearing.

Update and viewing by the assignments (iBrowse + TK):

1. The supervisor will be able to view and update "barrowed workers" only on days he authorized, which means that if the employee has authorized to assignments X and the assignments was reported on the 15/9/07 and 17/9/07 the supervisor will able to see the employee only on those days.
2. When employee reported of number of assignments on certain day while some of them the supervisor is authorizing and some not the unauthorized assignments will appear in the gray background, viewing only and only the authorized assignments will be open to be update.
3. The intersection of the assignments in the Ibrowse is done between the user's authorized assignments and the employee's authorized assignments.

Please note that this program does not support in related levels.

The Ibrowse does not support in combination of "TC based security" and "Multiple Administrators' Management".

In TK system, the "employee valid jobs (empvalj)" and "TC based security" cannot work together.