

**Preface**

The TK_XML interface only imports data into TimeKeeper, but using the TSTTK_XML.exe program some fine tuning can be achieved. There are two ways to change data coming into TimeKeeper:

1. Assigning a procedure that runs after the employee import and before the commit.
2. Assigning a DLL that runs functions before and after the employee import.

This document will refer only to section 1 and explain how to run a post-employee import procedure.

Environment: TKSQL

Required program files:

TK_XML.dll 05/14/2006 (or later)
tkxmlGate.exe 05/09/2006 (or later)
TSTTK_XML.exe 03/19/2006 (or later)
XML Schemas

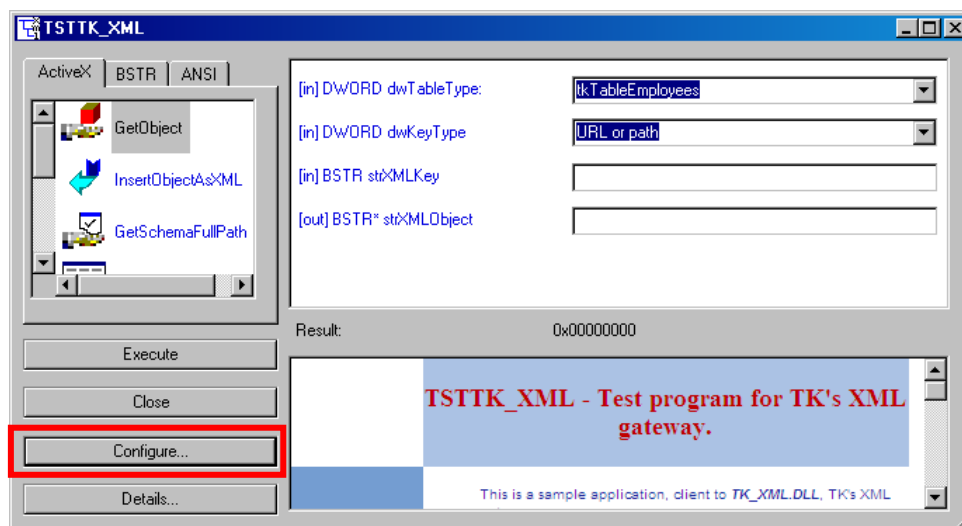
Customization Setup Steps

1. A new procedure needs to be created in the TimeKeeper DB. This procedure will include all the post-import actions that need to be done.
2. This procedure will have only one parameter which will be the employee number and defined as CHAR(12).



Important: By using TKXML gateway it is possible to create an internal procedure in the TimeKeeper DB, please note the content of this procedure and the implications are entirely at the responsibility of the dealer/partner who wrote the procedure.

3. Open the TSTTK_XML.exe program located in the TKSQL programs directory and click on the Configure button.





4. Choose the Post-Import and Site-Specifics tab and select the newly created procedure in the Post-Employee Import Procedure. This procedure will be activated after the import of each employee.

