

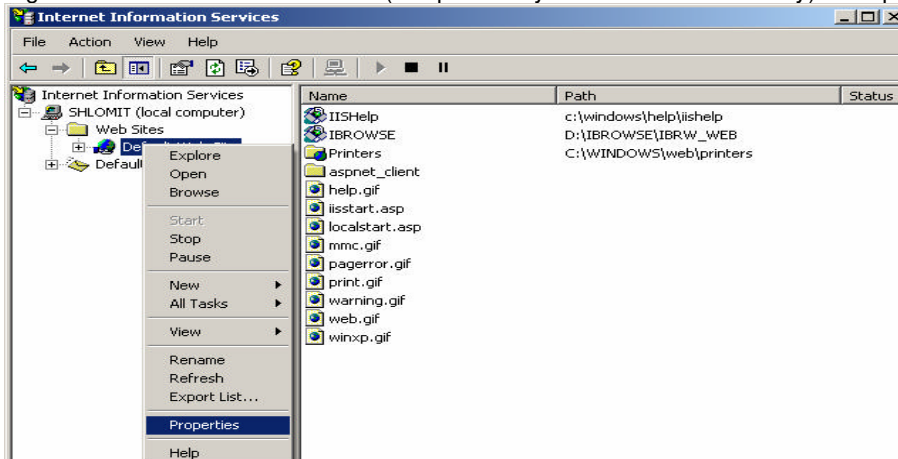


From: Arik Friedman / Lavie TimeTECH
To: All Dealers

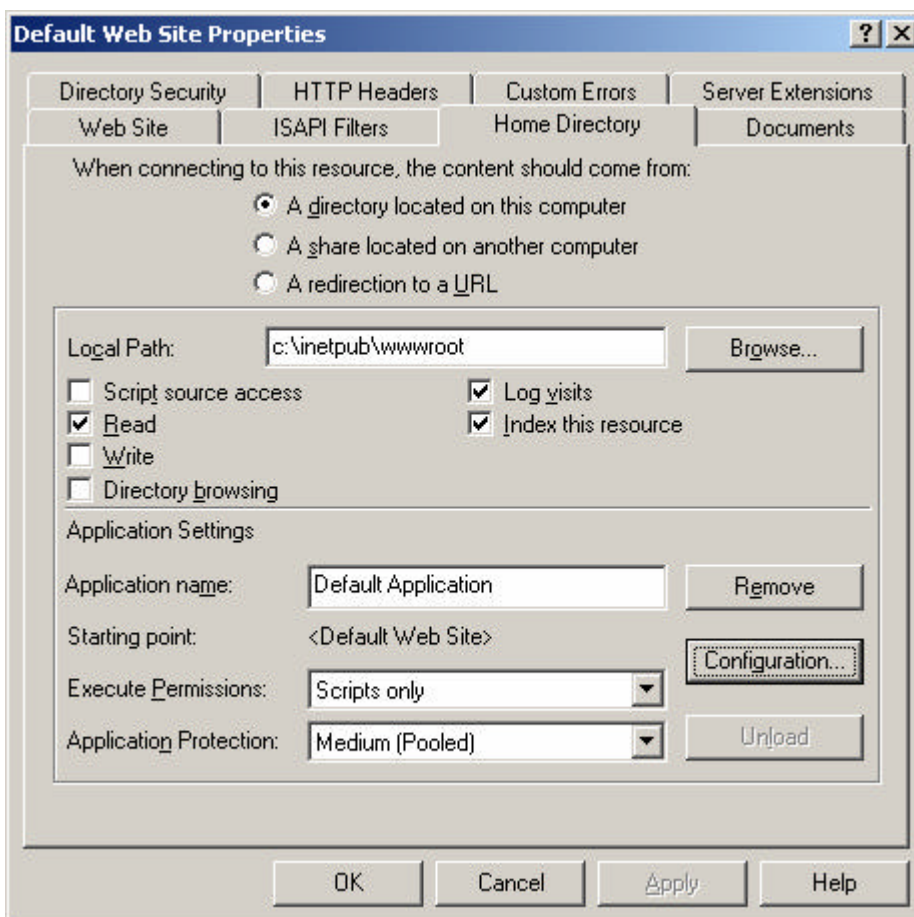
Re: Session Timeout in iBrowse

Session Timeout is available via an IIS setting as follows:

Right click on "Default Web Site" (or specifically on "iBrowse" directory) / Properties

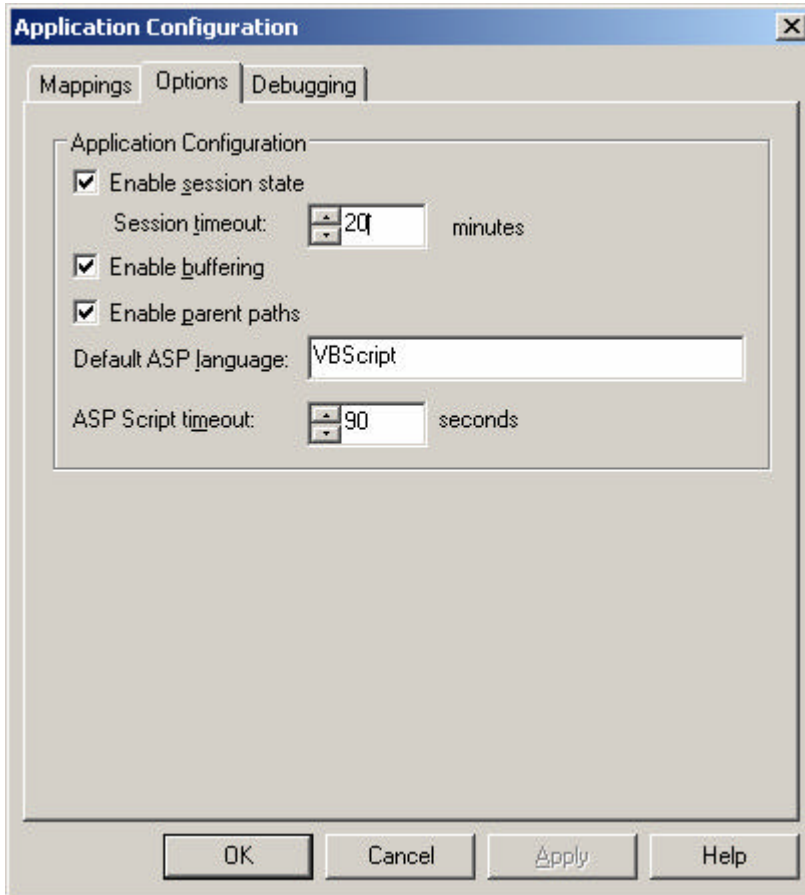


Select the "Home Directory" Tab, and choose "configuration":





Select the "Options" tab, check enable session time and adjust the "Session Timeout" accordingly:



In the above configuration, after 20 minutes in "idle mode" iBrowse will timeout to the login screen.